

UltraRes Quick Start Guide

Introduction

Once the UltraRes display has been installed and mounted, there are several important steps that you need to take in order to get the display up and running. This document is intended to give you a quick overview of the steps needed to connect cables, turn on your display and attach sources. For more in-depth information, see the Installation Guide that is on the USB drive in your accessory kit box.

- 1 Using the supplied AC power cord, connect one end to a grounded outlet and the other to the AC power input next to the I/O panel the bottom of the UltraRes display.



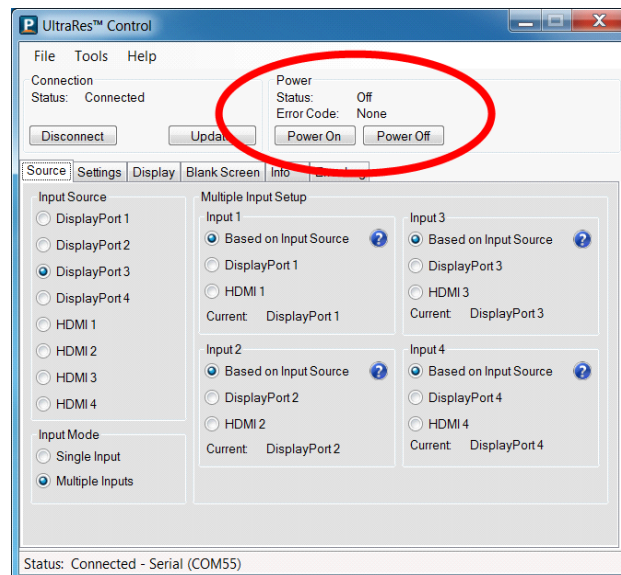
- 2 The IR module has an LED status and an IR receiver on the same module. In order for the remote control to work, you need to connect the wired IR module to the display, also on the bottom of the I/O panel. Then place the IR receiver in the desired place on or near the display.



- 3 Turn the power switch on. The display should now be in stand-by mode and the wired IR module LED should show solid blue.
- 4 Install the UltraRes Control software on your Windows PC. This software is contained on the USB drive in your accessory kit box. Follow the automatic prompts. For more information about this software, see the Installation Guide on the USB drive that is included in your accessory kit box. Connect a USB cable from the PC to the display. In the UltraRes Control software, click the **Connect** button to establish a connection to the display.
- 5 Turn on the display using one of two methods:
 - Pressing the power button on the remote control, point it at the IR receiver.



- Using the UltraRes Control software, select the **Power On** button.



- 6 Using either method in the previous step, the IR receiver LED should blink and then turn off. The display should change from a black screen to blue.

Setting Up UltraRes Using Single Inputs

Instead of having one central device into which you can connect and define your source inputs, single source setup requires connecting from a single-headed source to the display. For example, connecting one input directly from a Blu-ray player into the 84" display.

The example below uses the following:

- PC with 4K @ 24/25/30HZ output
- 4K Blu-ray player



The following formats are supported for single inputs:

- (1x) DisplayPort or HDMI 4K @ 24/25/30Hz
 - PC with DisplayPort 1.1a or 1.2 output
 - 4K Blu-ray player

There are two preferred ways in which you can select individual inputs. They are described on the following pages.

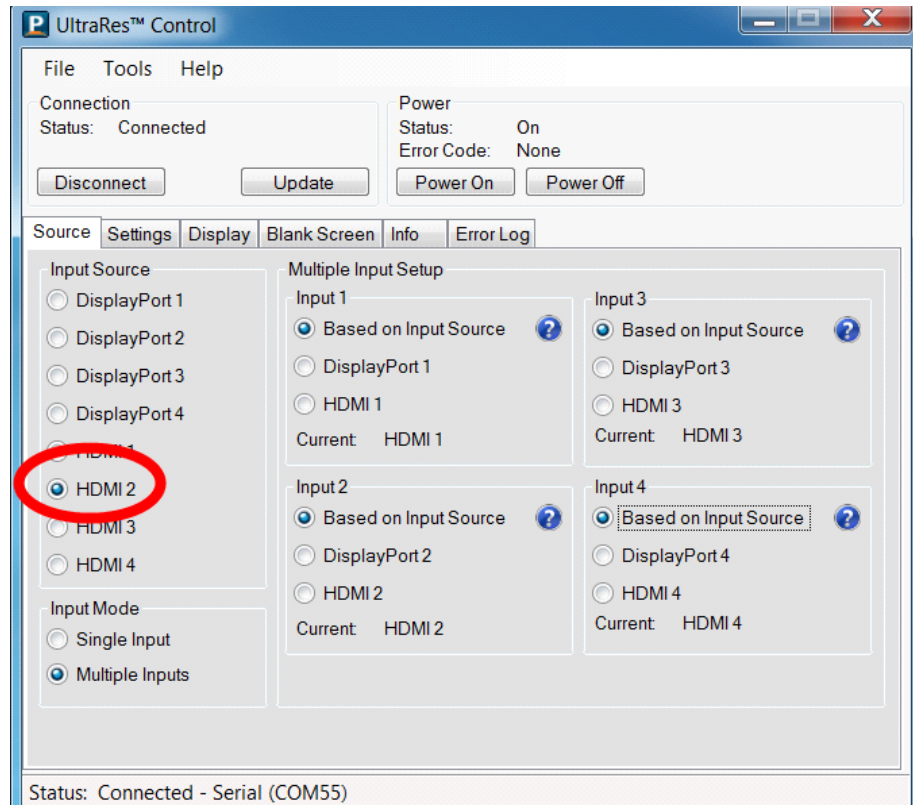
Selecting Individual Inputs Using the Remote Control

The UltraRes remote control has individual inputs that can be selected. For example, if this UltraRes input is connected to HDMI 2, press the HDMI 2 button on the remote control.



Selecting Individual Inputs Using the UltraRes Control Software

On the Source tab, select the input that is connected to the UltraRes display. For example, if this UltraRes input is connected to HDMI 2, select the **HDMI 2** radio button in the Input Source section on the left.



Setting Up UltraRes Using Multiple Inputs

In order to set up the UltraRes using multiple inputs, you must have a computer that contains four video outputs. All four outputs will then be connected to the UltraRes display. The following formats are supported for multiple inputs:

- (4x) DisplayPort or HDMI/DVI 1080p @ 24/50/60Hz
 - PC with DisplayPort or HDMI/DVI (or mix of both)
 - External processors
- (4x) DisplayPort or HDMI/DVI 960 x 2160 @ 60Hz
 - Needs a PC with a special graphics card setup
- (2x) DisplayPort or HDMI 1920 x 2160 @ 60Hz
 - Needs a PC with a special graphics card setup

Note: When using (2x) 1920 x 2160 @ 60Hz, the connections must be: Input 1 and Input 3 or Input 2 and Input 4. For example, using 1920 x 2160 @ 60Hz on Input 1 and Input 3 is allowed but using 1920 x 2160 @ 60Hz on Input 1 and Input 2 is **not** allowed.

The graphics card that you install on your main PC will determine what outputs will be plugged into the Planar UltraRes display. For example, some graphics cards have two HDMI outputs and two DisplayPort outputs. Any combination of these outputs is fine. Below is a visual example of how a basic connection might look.



In the example below, using four input channels on a computer, you would use one connector for each input on the I/O panel on the UltraRes display, as shown below.



As an example, you could use the following:

- Input 1 - HDMI 1
- Input 2 - DisplayPort 2
- Input 3 - DisplayPort 3
- Input 4 - HDMI 4

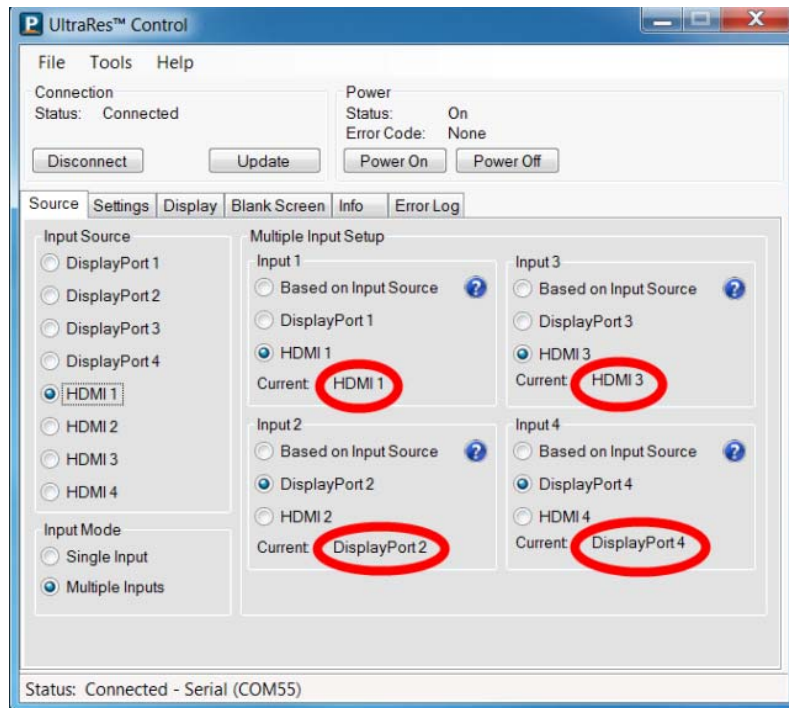
Note: You cannot plug into two ports on the same input channel. For example, you can't plug into HDMI 1 and DisplayPort 1 in Input 1 as shown above. You can only connect to **one** input for each input channel.

Select that source using one of two methods:

- Using the remote control.



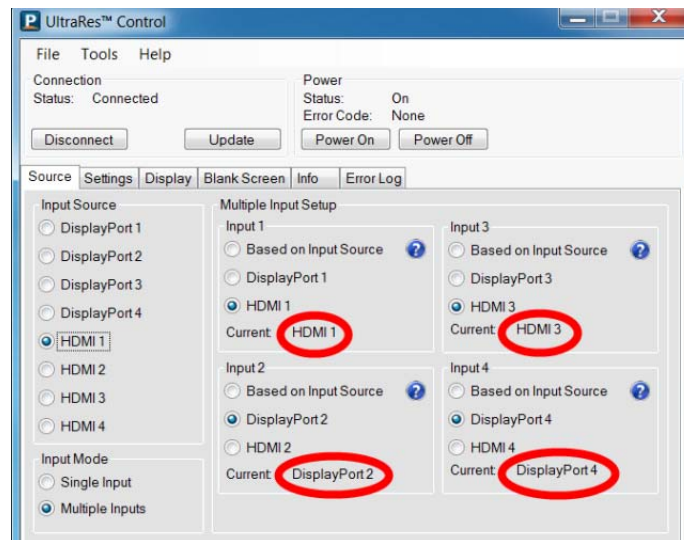
- Using the UltraRes Control software.



Using UltraRes Control Software to Set Up Multiple Inputs

If you use the UltraRes Control software to set up multiple sources, there are three different settings per input channel. Before continuing, make sure you have selected the **Multiple Inputs** radio button in the lower left corner.

- Based on Input Source - This default option automatically selects the same type of input as the current Input Source setting. For example, if you have four HDMI input sources, this feature should detect that your sources are connected to HDMI 1-4.
- Select Individual Inputs - The example below shows the circled inputs that were selected individually.



When you are finished, click **Update** to save your changes.

